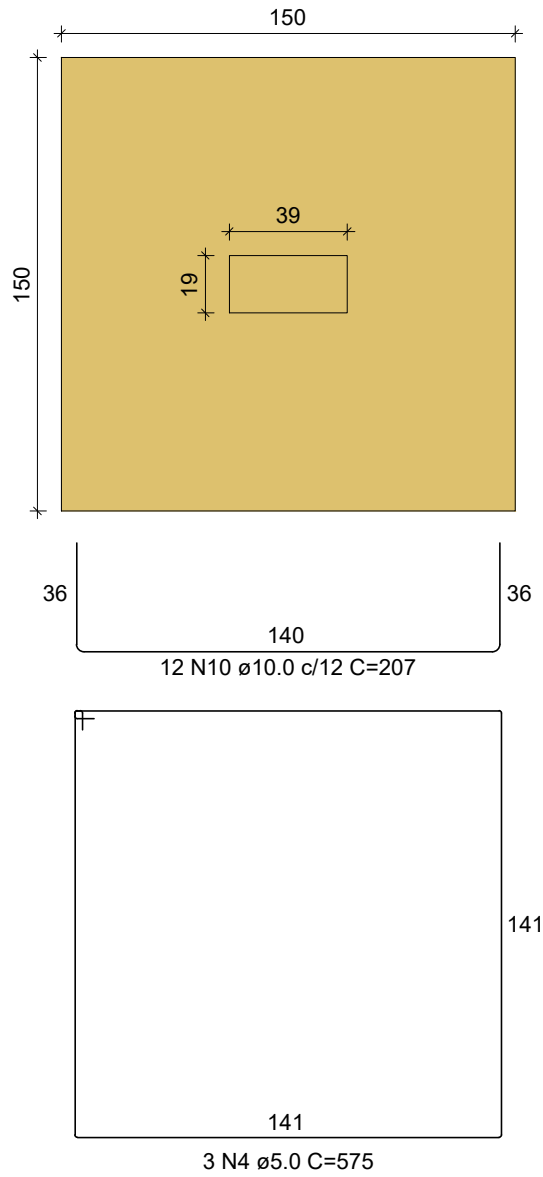


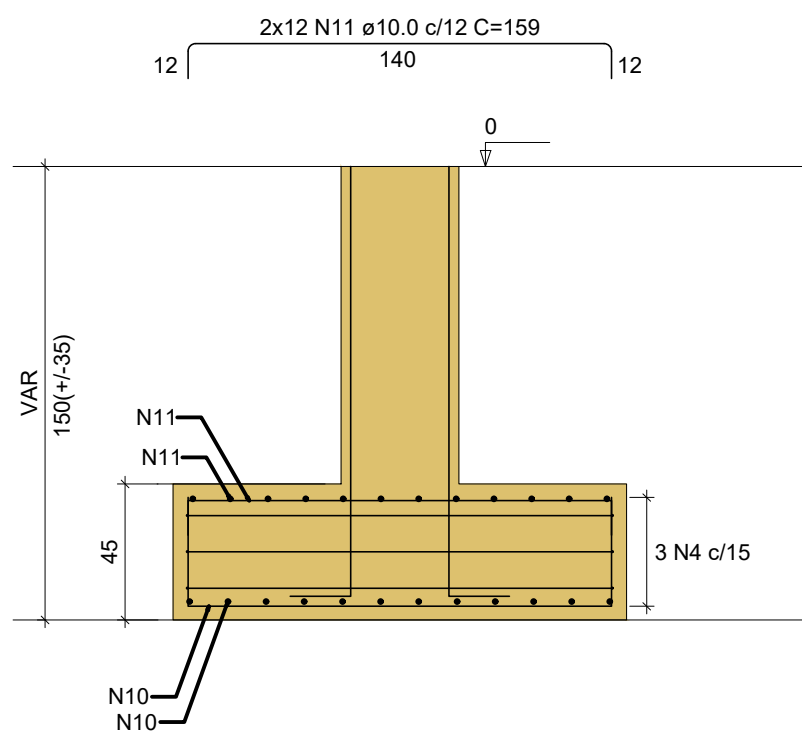
S1=S2=S3=S4=S9=S12

PLANTA
ESC 1:25

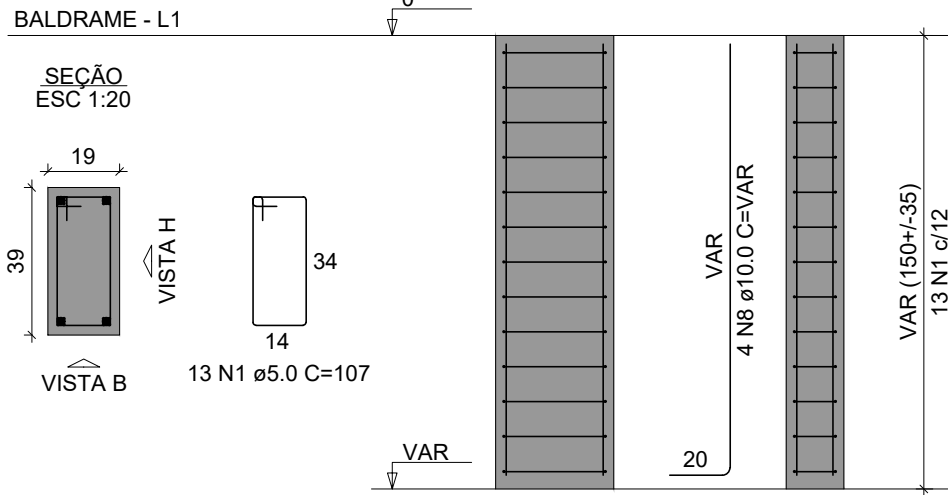


Solo com capacidade de suporte > 2.00 kgf/cm²
Solo compactado sobre a sapata
peso específico > 1800.00 kgf/m³

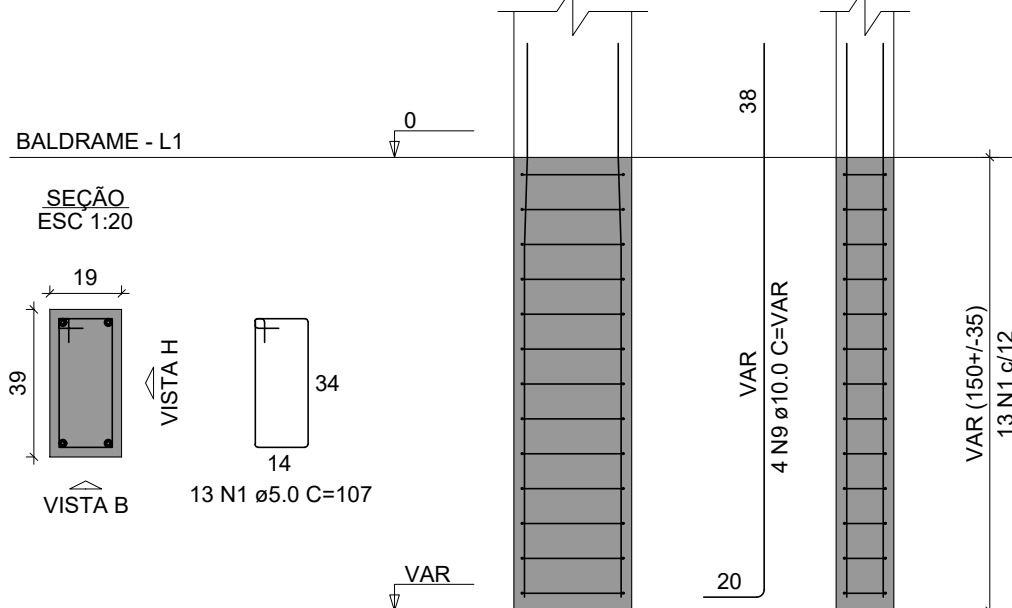
CORTE
ESC 1:25



P1=P2=P3=P4



P9=P12



RELAÇÃO DO AÇO

4xP1 P5 3xP6
2xP9 P10 P11
P13 3xP14 5xS1
S10 S11 5xS13
3xS14

AÇO	N	DIAM (mm)	QUANT	C UNIT (cm)	C.TOTAL (cm)
CA60	1	5.0	130	107	13910
	2	5.0	39	109	4251
	3	5.0	30	131	3930
	4	5.0	18	575	10350
CA50	5	5.0	3	585	1755
	6	5.0	3	575	1725
	7	8.0	155	159	24645
	8	10.0	36	VAR	VAR
	9	10.0	20	VAR	VAR
	10	10.0	144	207	29608
	11	10.0	144	159	22896
	12	10.0	11	222	2442
	13	10.0	13	197	2561
	14	10.0	11	174	1914
	15	10.0	25	149	3725
	16	10.0	11	207	2277
	17	10.0	12	187	2244
	18	10.0	10	169	1690
	19	10.0	66	158	10428
	20	12.5	12	VAR	VAR

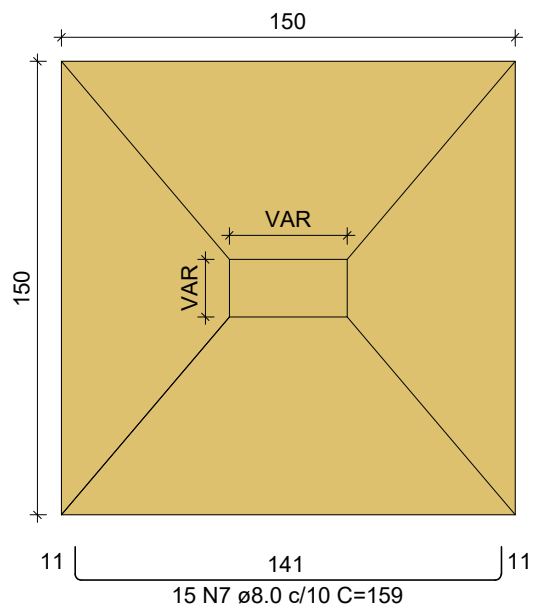
RESUMO DO AÇO

AÇO	DIAM (mm)	C.TOTAL (m)	PESO + 10% (kg)
CA50	8.0	246.5	107
	10.0	898.2	609.2
	12.5	25.2	26.7
CA60	5.0	359.2	60.9
PESO TOTAL (kg)			
CA50	742.8		
CA60	60.9		

Volume de concreto (C-25) = 15.00 m³
Área de forma = 51.10 m²

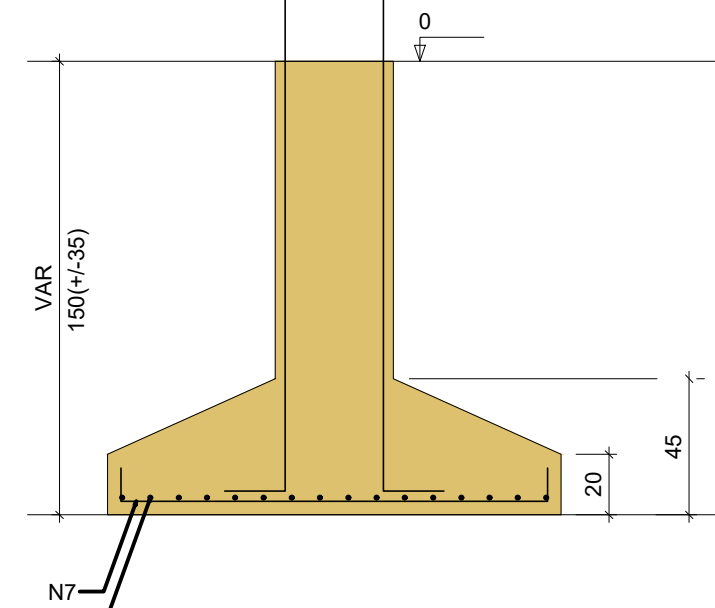
S5=S6=S7=S8=S13

PLANTA
ESC 1:25

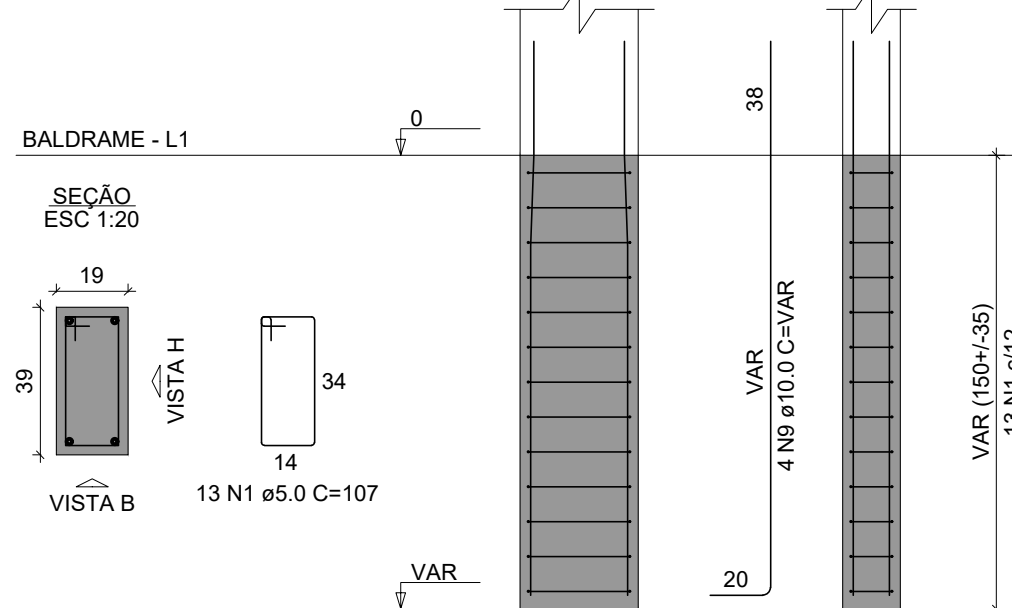


Solo com capacidade de suporte > 2.00 kgf/cm²
Solo compactado sobre a sapata
peso específico > 1800.00 kgf/m³

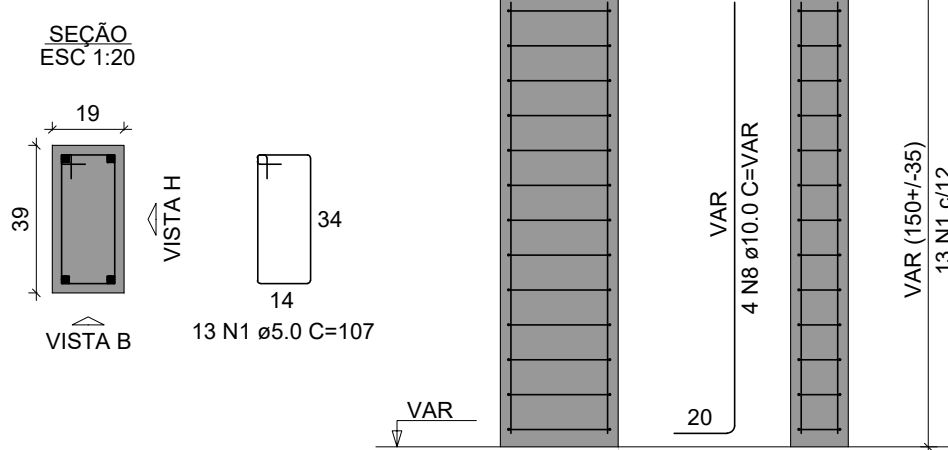
CORTE
ESC 1:25



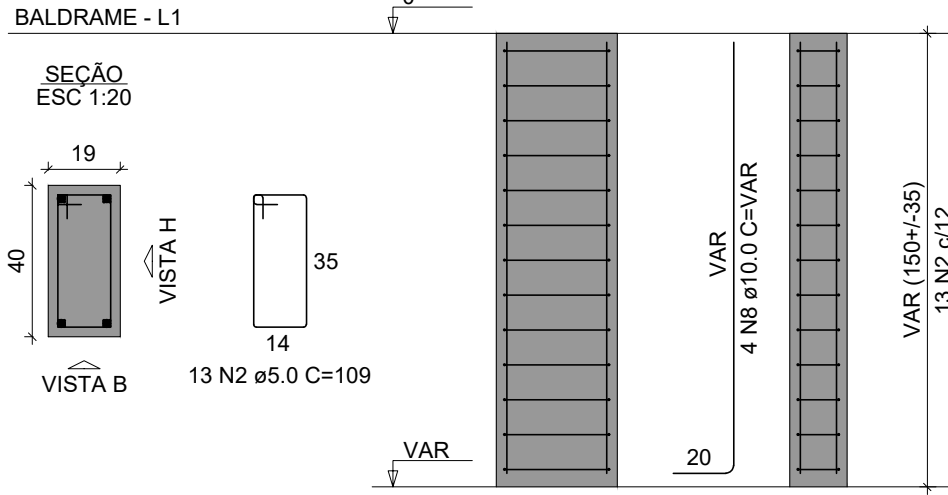
P13



P5

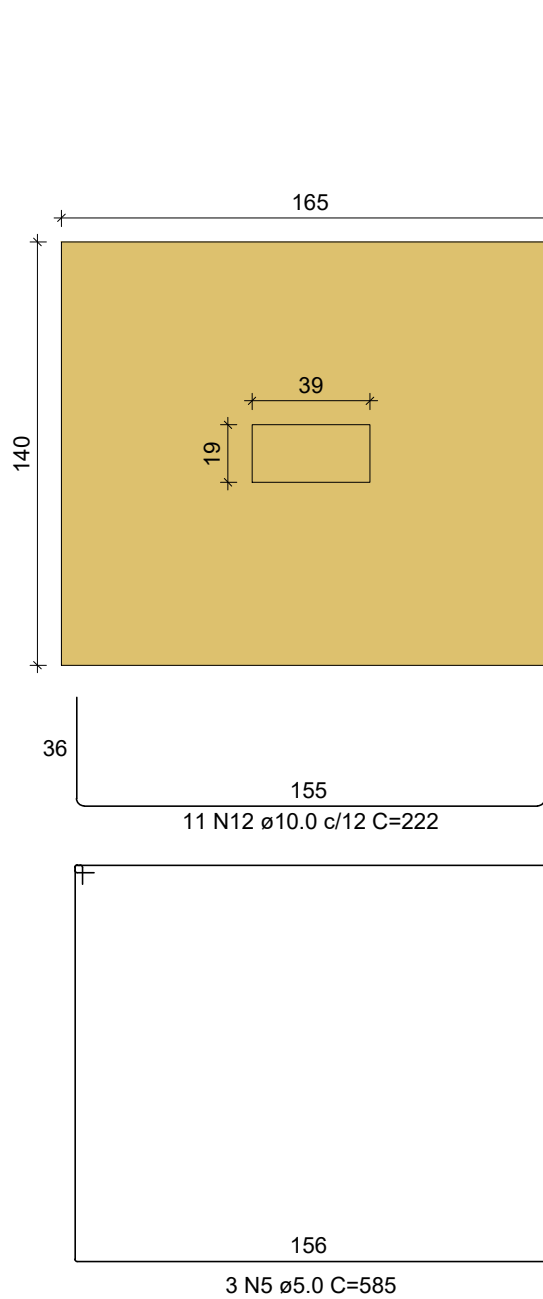


P6=P7=P8



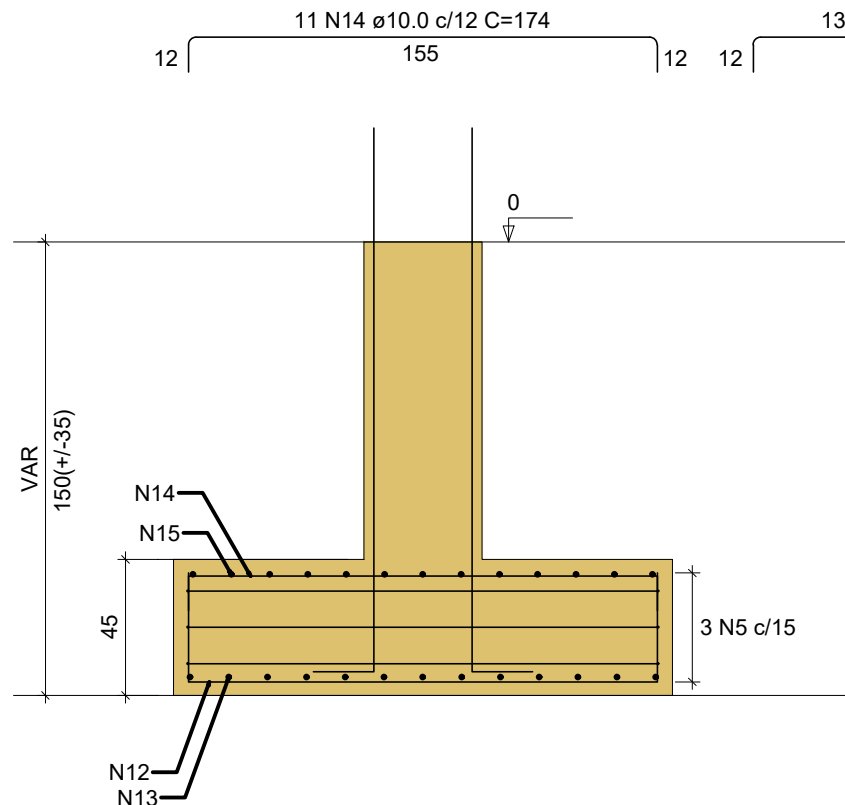
S10

PLANTA
ESC 1:25

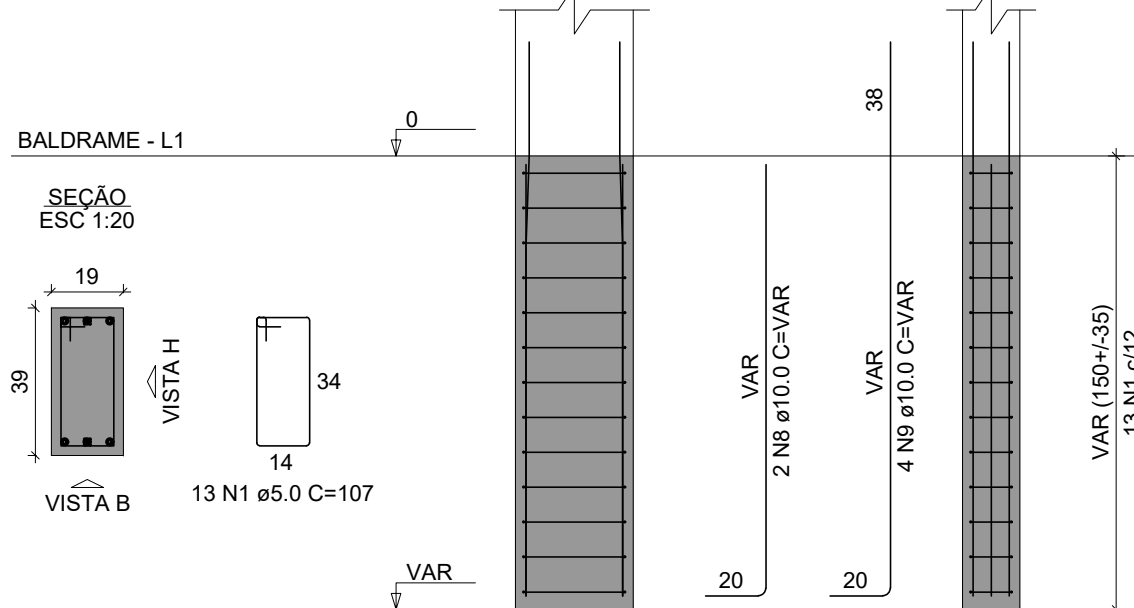


Solo com capacidade de suporte > 2.00 kgf/cm²
Solo compactado sobre a sapata
peso específico > 1800.00 kgf/m³

CORTE
ESC 1:25



P10



RUBENS LUIS ROLANDO SOUZA
ENGENHEIRO CIVIL

Revisões da Prancha

001 Revisão Geral

Nu. Comentários

Rubens

Autor

26/08/2025

Data

PROJETO ESTRUTURAL

PREFEITURA MUNICIPAL DE CAPANEMA

CONSTRUÇÃO DE UM MURO DE ARRIMO
COM PAREDE DE CONCRETO
DETALHE SAPATAS

Rua Martin Notar entre as ruas Tupinambás e Av Independência

Desenho: Eng Rubens

Área: 50,48 m²

Data: 26/08/2025

Unidade: cm

Escala:

01/50

Prancha

03/06